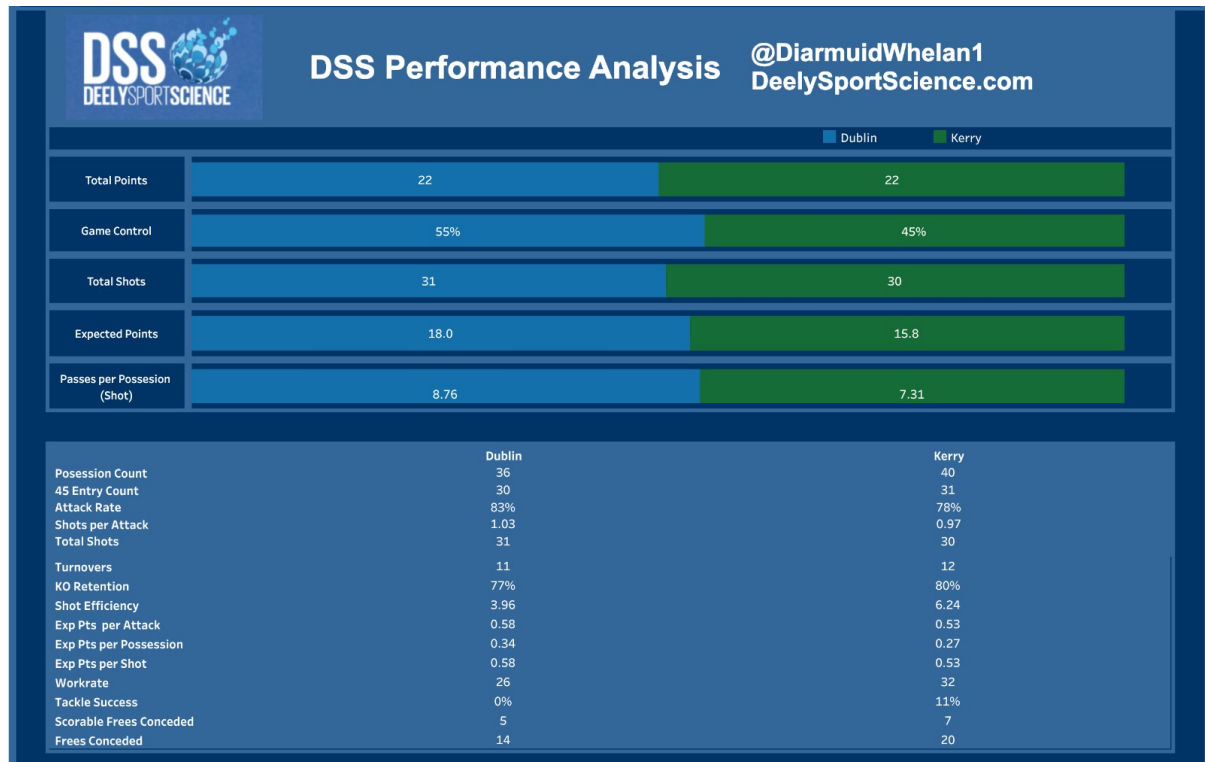




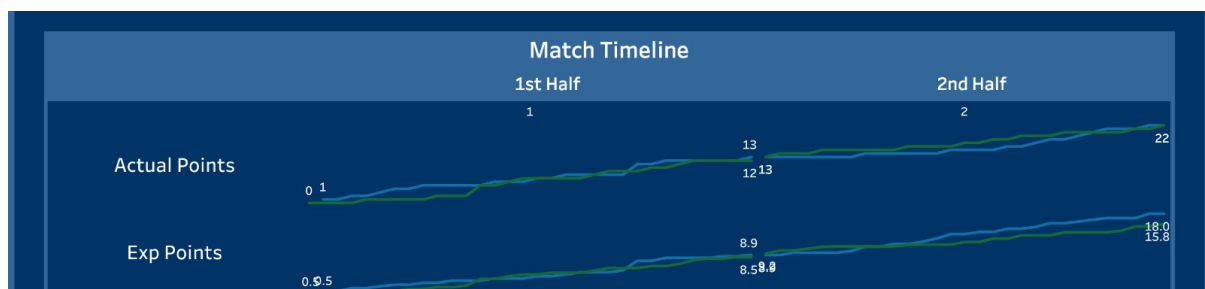
Dublin v Kerry Allianz NFL Division 1 2020

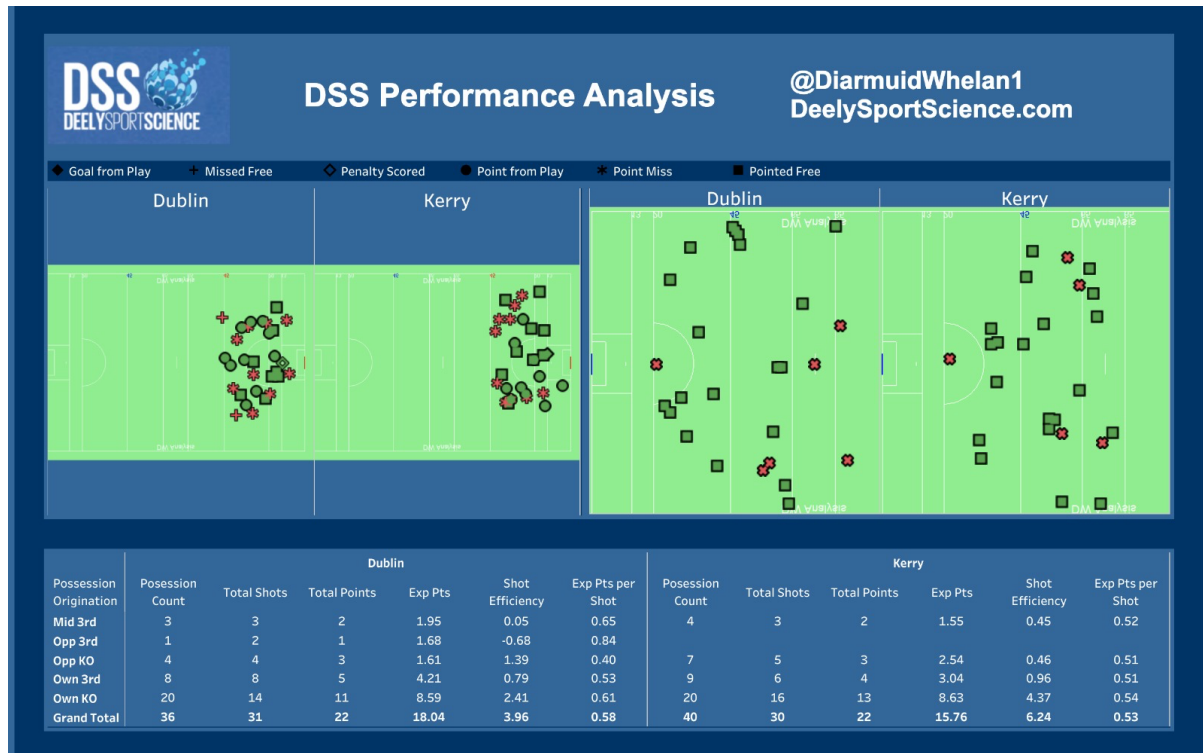
Dublin 1-19 Kerry 1-19



Tight game with Dublin probably just shading it in terms of chances created. Both team's displayed their proficiency in front of goal with Kerry's 6.24 shooting efficiency compensating for the difference in chances created. Despite getting similar shot counts away Dublin's superiority tells in the quality of these shots.

Both teams matched each other with neither team hitting any massive period of dominance





Marginal shot quality difference is clear from the shot locations. Dublin's refusal to take shots from outside the optimal zone remains a constant from the last few years. Kickout strategy and results are fairly similar. Both teams managing to retain 80% of kickouts, converting those won into shots and scores and forcing 3 points from winning the oppositions kickout. Dublin's kickouts concentrate on wide channels inside the 45 while Kerry focused more centrally and deeper. Only 1 possession for either team originated inside opponent's 45 with possession prioritised.